

Vendor Spotlight

As a family-managed company, Watermarks Kitchen & Bath Boutique, has been serving Ontario's wholesale plumbing, HVAC and Hydronics market since 1962. The company is a division of Marks Supply, Inc. with nine branches offering a breadth of knowledge and expertise to assist clients with any type or size project.



Preparing for a Meeting with Watermarks

Starting with Slotegraaf

First, you will work with Slotegraaf's Project Manager and Designer whom note site measurements, establishes goals and needs of your bathroom or kitchen design. From here, they will be able to determine your design style and the finishes needed for the overall space. When it comes to your plumbing selections, our Designer will confirm the amount and type plumbing and fixtures needed, budget, critical order dates, and then passes this info onto Watermarks.

To see products and finishes in-person, you have the opportunity to check out Watermarks' showroom and speak with their consultants to further assist you in the best solutions and selections. This meeting can be arranged by our Designer, who can also accompany you on the visit.

Planning Ahead

- Have your plans and any inspirational photos physically or digitally ready.
- Our Designer will also notify Watermarks' consultants ahead of time with design inspiration determined during your Slotegraaf meeting to help prepare for your visit.
- You can also check out Slotegraaf's kitchen and bathroom project inspiration online to give you an idea of styles and looks that appeal to you.

While you will have an initial consultation with our Designers and remain in contact throughout the project, Watermarks consultants will also play a part in helping you establish the space you're envisioning with their plumbing fixtures.

What to Expect from Watermarks

from Consultation to Installation

Their Showroom, Your Show

Upon walking into the showroom, you'll be introduced to a variety of design vignettes and 'Mix n' Match' displays. Vignettes are laid out accordingly; based on style and theme to help readily identify products that best fit your vision and style preferences

"We use styling themes to help clients navigate their style preference. By showing clients the different vignettes, we can determine what they prefer when it comes to plumbing fixtures quickly." -Melissa Stremble, Showroom Supervisor



The Watermarks Difference

Their consultants and outside sales staff offer the following:

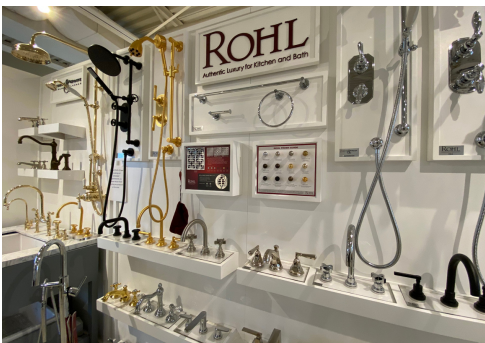
- Customer-Driven Dedication
- Personalized Support
- A True Understanding of Your Needs

Factors to Consider:

- Your lifestyle
- If you have kids
- How you use your space
- Functionality of fixtures
- How often the space will be used

"We ask a number of qualifying questions that will lead us to a product we feel will best suit the customer's needs."

-Melissa Stremble, Showroom Supervisor



Ensuring an Excellent Experience & Final Result

Once Watermarks' Consultants help the client solidify their selections, while also ensuring it correlates with the Slotegraaf Designer's recommendations, budget, and design, they will send these selections with pricing to Slotegraaf's Project Manager for final approval with the client. After the approval and plumbing purchase order is complete, Slotegraaf is able to move forward with the construction phase of the home. We will coordinate all sub-trades, including plumbing, and establish install details and timeline.